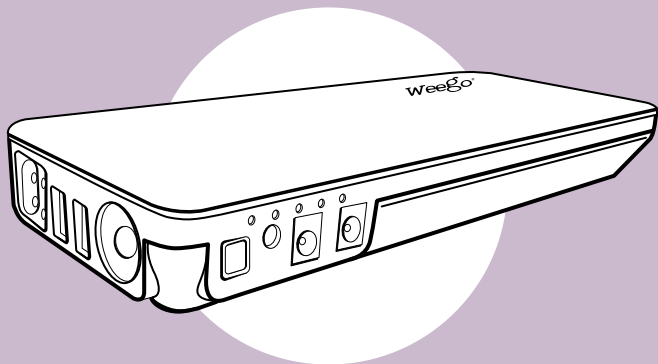


# WeeGo®



**Jump Starter Battery+**

**Model# JS18 PROFESSIONAL 18000 mAh**

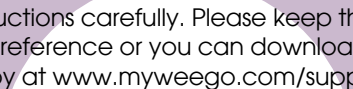
**Quick Start Guide**



**Thank you for choosing Weego Jump Starter model JS18.**

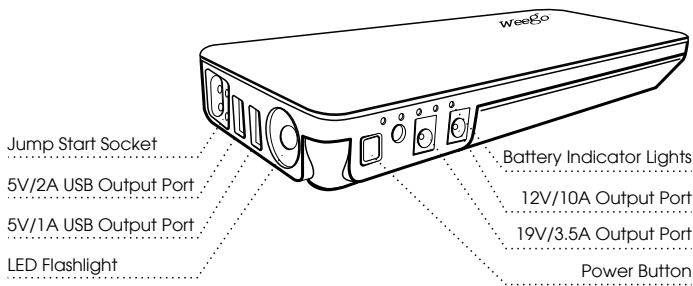
Always follow basic safety precautions when using electronics or jump starting a vehicle.

Read all instructions carefully. Please keep this Quick Start Guide for easy reference or you can download an electronic copy at [www.myweego.com/support](http://www.myweego.com/support).



Rev  
0815

## WeeGo At A Glance



## Quick Start Guide – Ready, Get Set, Jump Your Vehicle!

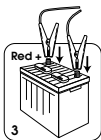
### BEFORE JUMP STARTING YOUR VEHICLE

- For 12V Vehicles ONLY! Do not use with any other system (6V, 24V, etc.)
- Read vehicle owner's manual: The vehicle manufacturer may have specific cautions and instructions about jumping your vehicle of which you should be aware.
- Put your vehicle in PARK and engage the emergency break.
- **Turn off ALL electronics in your vehicle** (air conditioner, heat, radio, lights, chargers, etc.) to ensure optimal performance of your WeeGo and safety of your electronics.
- Remove any and all USB and/or charging devices connected to your WeeGo.
- Make sure the vehicle battery terminals, jumper cables and WeeGo unit are free of any moisture.

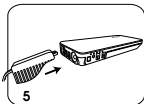
### JUMP STARTING YOUR VEHICLE

1. Ensure key is in the "OFF" position in the ignition. For smart-key fobs (push-to-start vehicles), make sure the vehicle is completely "OFF" before jump starting.
2. Identify the positive and negative terminals on your vehicle's battery. The positive terminal will usually be labeled with a (+) and/or red coloring.

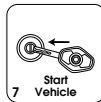
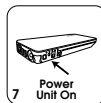
3. **Do not attach clamps to Weego yet!** First, securely attach the black clamp to the vehicle's negative (-) battery terminal, then the red clamp to the vehicle's positive (+) battery terminal. **Be sure to adjust your clamps to achieve MAXIMUM contact on both sides of the clamps.** Clamp connection is a 'good, better, best' scenario — a poor or miniscule connection will prevent you from starting your engine.



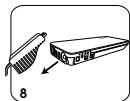
4. Make sure your Weego is OFF.
5. Securely fasten the clamps into your Weego. Check that you have a secure connection between the terminals and clamps, and between the clamps and Weego. Check the lights on the clamps:



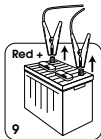
- a. **IF RED LIGHT IS ON AND ALARM SOUNDS:** You have connected the clamps to the wrong terminals. Please reread and follow step 3. **DO NOT PRESS "BOOST"!**
- b. **IF GREEN LIGHT IS ON:** Your battery is still at a healthy level. **DO NOT PRESS "BOOST"**.
- c. **IF GREEN LIGHT IS BLINKING AND ALARM SOUNDS:** Your battery is at a low, unhealthy level. You will need to press "BOOST" to jump start your vehicle.
- d. **IF NO LIGHT IS ON:** You either have a poor connection, or your battery is extremely low. Recheck all connections. If still no light appears, press "BOOST".
6. Place your Weego in a secure location so it will not fall when starting the vehicle.



7. Power ON your Weego. Start your vehicle.
- a. **If after 3 seconds engine does not start, turn key to OFF position.**
- b. Detach your Weego from the clamps. Wait 60 seconds and then follow steps 1-7. If problems still persist, please see the Troubleshooting section in your Weego Owner's Manual for other possible causes.



8. After a successful start, quickly detach your Weego from the clamps.
9. Detach the clamps from the vehicle's battery.



10. You are now able to drive your vehicle. You should be sure to run your vehicle for at least 15 minutes before shutting it off again.